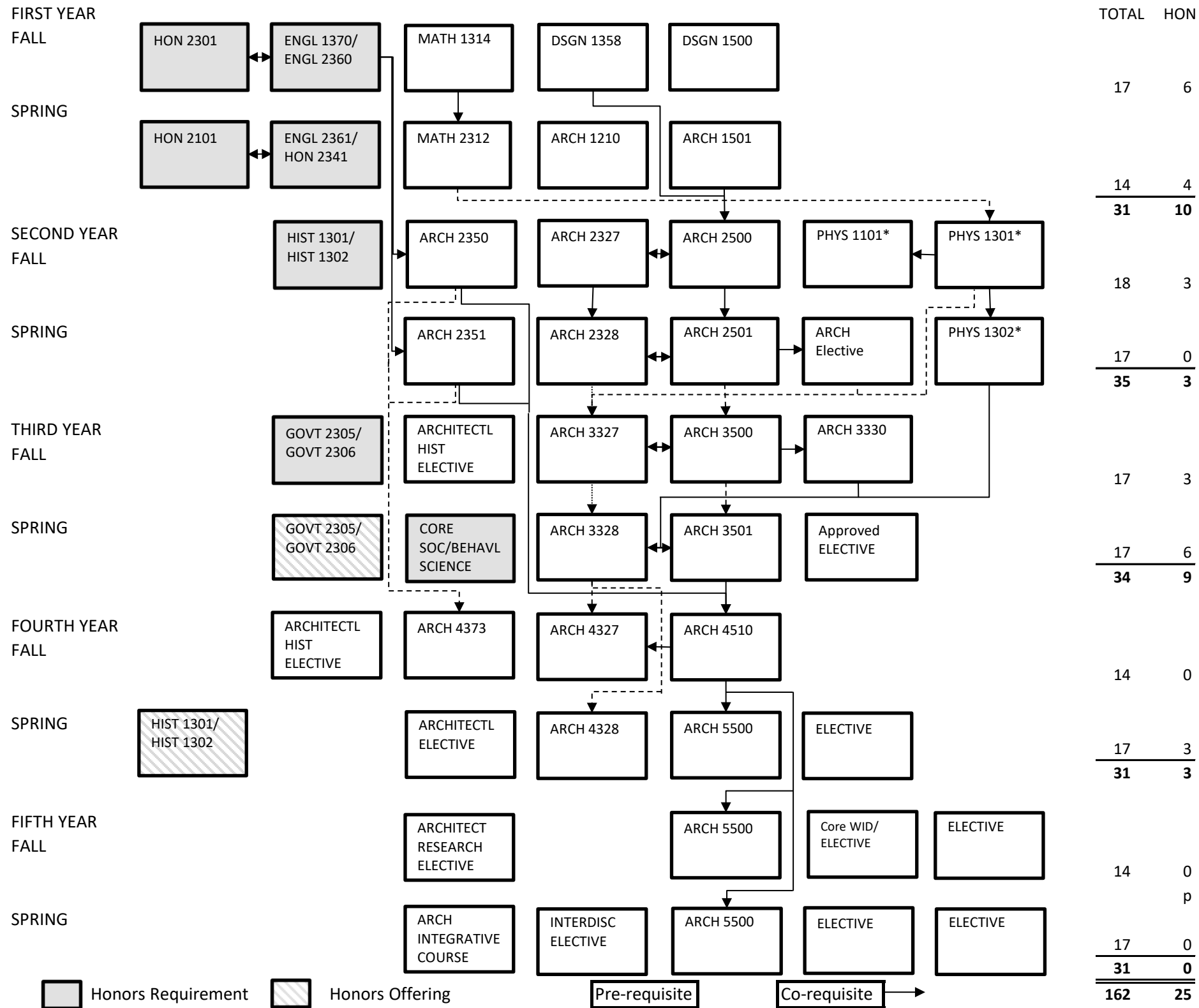

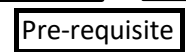


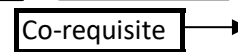
**BACHELOR OF ARCHITECTURE IN ARCHITECTURE  
UNIVERSITY HONORS**



 Honors Requirement

 Honors Offering

 Pre-requisite

 Co-requisite

\*It is recommended that students take PHYS 1301, PHYS 1302, and a lab over the summer after your first or second year.

Class	Prerequisite	Corequisite
ARCH 1210	Architecture Major	
ARCH 1501		
ARCH 2327	MATH 2312	
ARCH 2328	ARCH 2327	ARCH 2501 or INAR 2501
ARCH 2350		ENGL 1370 or ENGL 1302
ARCH 2351	ARCH 2350	ENGL 1370 or ENGL 1302
ARCH 2500	ARCH 1501, ARCH 1358	ARCH 2327
ARCH 2501	ARCH 2500	ARCH 2328
ARCH 3230		ARCH 3500
ARCH 3327	ARCH 2328, PHYS 1301	ARCH 3500
ARCH 3328	ARCH 3327	ARCH 3501, PHYS 1302
ARCH 3500	ARCH 2501	ARCH 3230, ARCH 3327
ARCH 3501	ARCH 3500	ARCH 3230, ARCH 3328
ARCH 4327	ARCH 3328	
ARCH 4328	ARCH 3501, ARCH 3328	
ARCH 4373	ARCH 2350 and ARCH 2351 or SCN 1301 or PSYC 2301	
ARCH 4510	ARCH 2350, ARCH 2351, ARCH 3501, ARCH 3328	
ARCH 5500	ARCH 4510	
DSGN 1358		
DSGN 1500	Architecture Major	
MATH 2312	MATH 1314	
PHYS 1101		PHYS 1301
PHYS 1301	MATH 2312 or equivalent	
PHYS 1302	PHYS 1301	