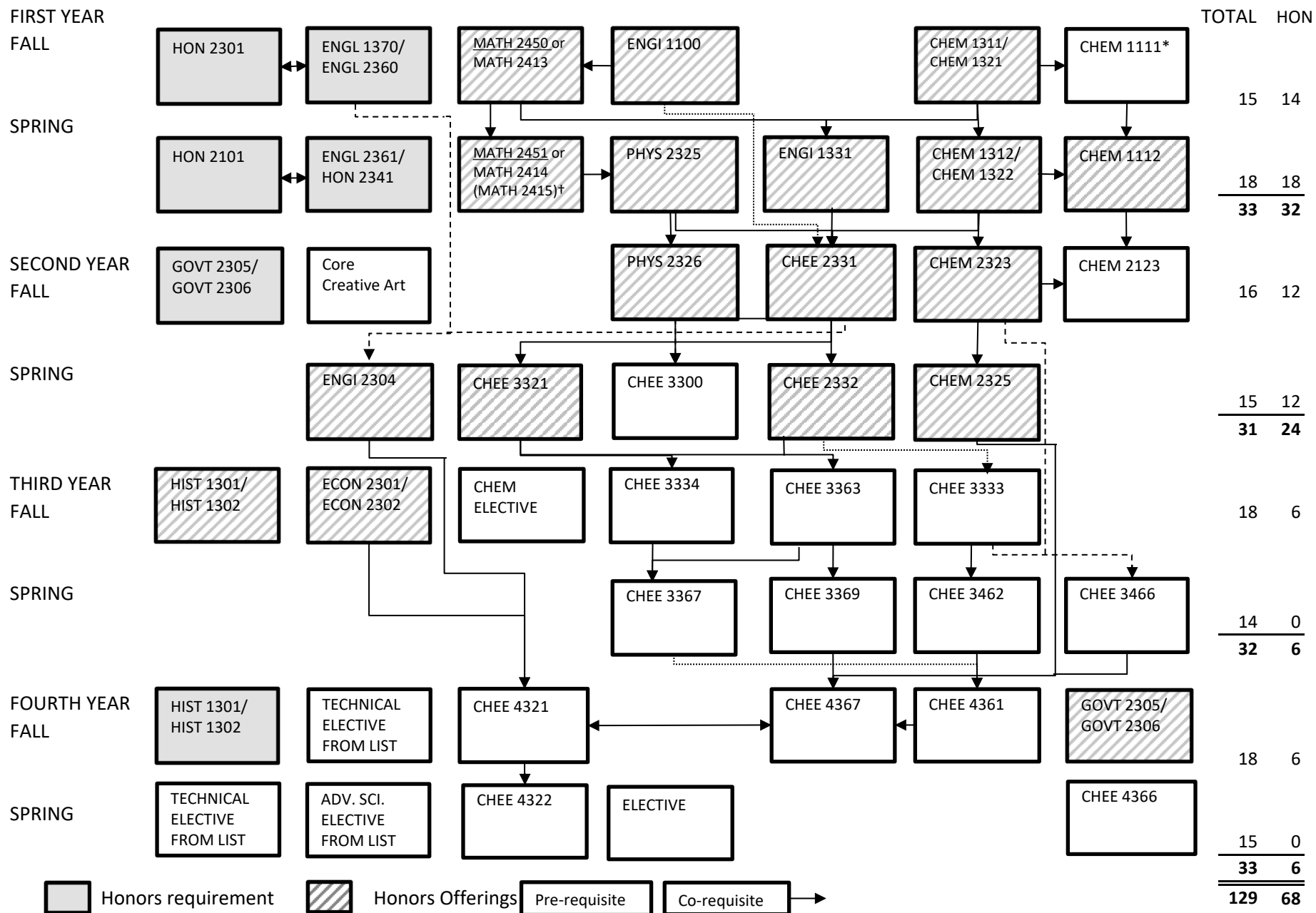


BACHELOR OF SCIENCE IN CHEMICAL ENGINEERING UNIVERSITY HONORS



*CHEM 1111 lab not required for students who complete the Honors Fundamental Chemistry Sequence (CHEM 1321, CHEM 1322, CHEM 1112H) receive a grade of C- or better in all coursework

Class	Prerequisite	Corequisite
CHEE 2331	CHEM 1312, MATH 2414 or MATH 2451, PHYS 2325, ENGI 1100, ENGI 1331	
CHEE 2332	CHEM 1312, MATH 2415 or MATH 2451, PHYS 2325, CHEE 2331	
CHEE 3300	CHEE 2331, CHEM 1312, PHYS 2326	
CHEE 3321	MATH 2415 or 2451, CHEE 2331	
CHEE 3333	CHEE 2332	
CHEE 3334	CHEE 2332, CHEE 3321	
CHEE 3363	CHEE 2332, CHEE 3321	
CHEE 3367	CHEE 3334, CHEE 3363, CHEE 3321	
CHEE 3369	CHEE 3363	
CHEE 3462	CHEE 3333	
CHEE 3466	CHEE 3333, CHEM 2323	
CHEE 4321	CHEE 3300, CHEE 3333, CHEE 3369, CHEE 3462, ECON 2301 or ECON 2302 or ENTR 3310 or ENTR 3311, ENGI 2304	CHEE 4367
CHEE 4322	CHEE 4321	
CHEE 4361	CHEE 3462, CHEE 3369, CHEE 3367	CHEE 4367
CHEE 4366	BIOE 3341 or CHEE 3466	
CHEE 4367	CHEE 3369, CHEM 3332, CHEE 3466	
CHEM 1111		CHEM 1311
CHEM 1112	CHEM 1111	
CHEM 1311	MATH 2312	
CHEM 1312	CHEM 1311	
CHEM 2123	CHEM 1112	CHEM 2323
CHEM 2323	CHEM 1312	
CHEM 2325	CHEM 2323, CHEM 1312	
ECON 2302	MATH 1314	
ENGI 1100	MATH 2413	
ENGI 1331	MATH 2413, CHEM 1311 or PHYS 2325	
ENGI 2304	ENGI 1100, ENGL 1370 or ENGL 1302, CHEE 2331	
MATH 2450	85+ on the math placement exam	
MATH 2451	MATH 2450	
PHYS 2325	MATH 2413 or MATH 2450	
PHYS 2326	PHYS 2325, MATH 2414 or MATH 2451	

Note†

Students who successful complete the Accelerated Calculus sequence (MATH 2450 & 2451) will receive equivalent credit to calculus 1, 2, & 3.