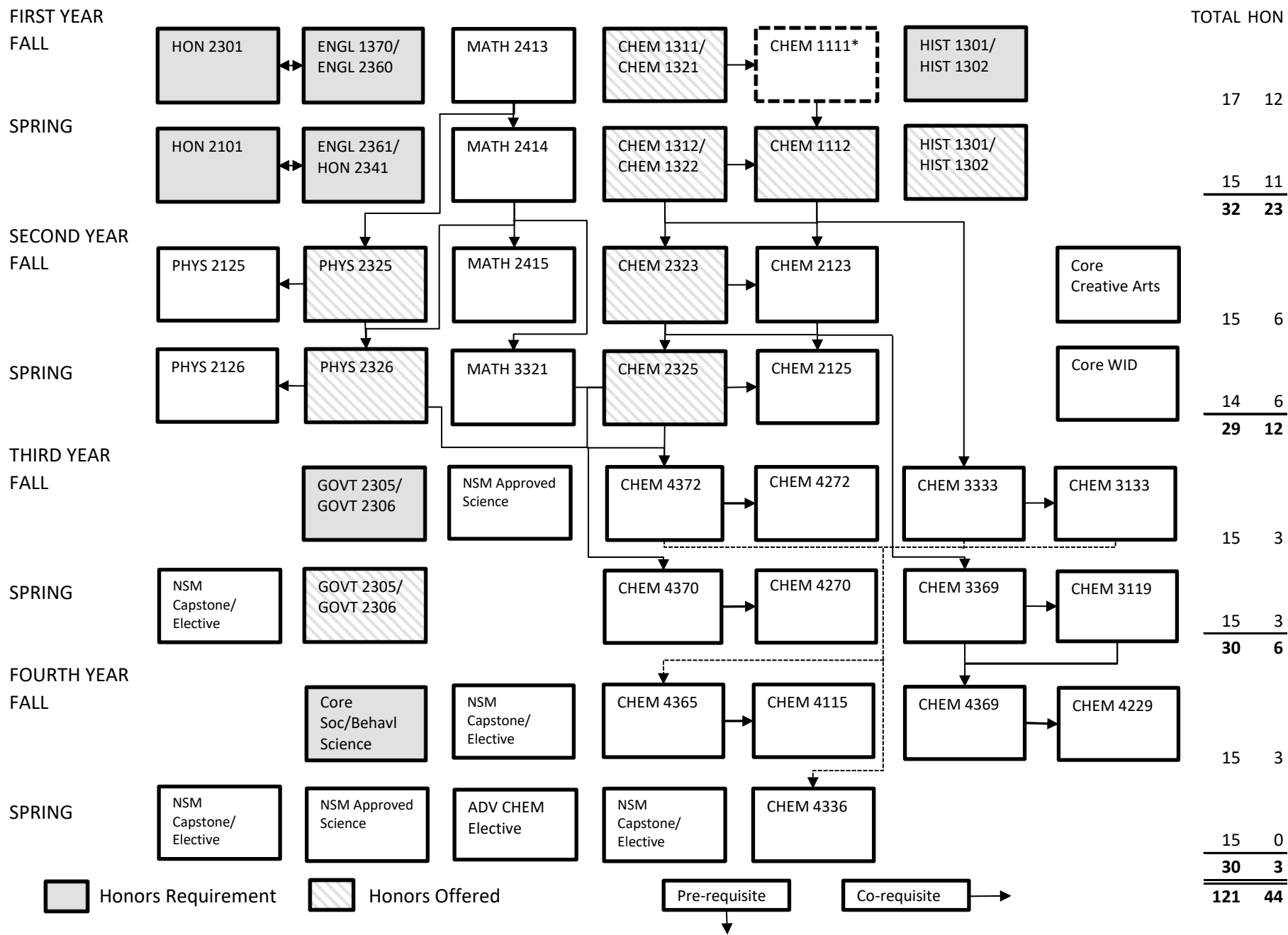


BACHELOR OF SCIENCE IN CHEMISTRY UNIVERSITY HONORS



*CHEM 1111 is not required for students completing the Honors Fundamentals of Chemistry Sequence (CHEM 1321, CHEM 1322, CHEM 1112H) and who receive a grade of C- or better in all coursework

| Class | Prerequisite | Corequisite |
|-----------|-----------------------------------|---------------------------------|
| CHEM 1111 | | CHEM 1311 |
| CHEM 1112 | CHEM 1111 | CHEM 1312 |
| CHEM 1311 | MATH 2312 | |
| CHEM 1312 | MATH 2312, CHEM 1311 | |
| CHEM 1321 | MATH 2312 | |
| CHEM 1322 | CHEM 1321 | |
| CHEM 2123 | CHEM 1112 | CHEM 2323 |
| CHEM 2125 | CHEM 2123 | CHEM 2325 |
| CHEM 2323 | CHEM 1312 | |
| CHEM 2325 | CHEM 2323, CHEM 1312 | |
| CHEM 3119 | | CHEM 3369 |
| CHEM 3133 | | CHEM 3333 |
| CHEM 3333 | CHEM 1312, CHEM 1112 | |
| CHEM 3369 | CHEM 2323, CHEM 2123 | |
| CHEM 4115 | | CHEM 4365 |
| CHEM 4229 | CHEM 3119, CHEM 3369 | CHEM 4369 |
| CHEM 4270 | CHEM 3119 or CHEM 2125 | CHEM 4370 |
| CHEM 4272 | | CHEM 4372 |
| CHEM 4336 | CHEM 2125, CHEM 2325, CHEM 4372 | |
| CHEM 4365 | CHEM 3333, CHEM 3133, CHEM 4372 | |
| CHEM 4369 | CHEM 3119, CHEM 3369 | |
| CHEM 4370 | | MATH 3321, PHYS 2326, CHEM 2325 |
| CHEM 4372 | | MATH 3321, PHYS 2336, CHEM 2325 |
| MATH 2413 | MATH 2312 | |
| MATH 2414 | MATH 2413 or MATH 2450 | |
| MATH 2415 | MATH 2414 | |
| MATH 3321 | MATH 2414 | |
| PHYS 2125 | | PHYS 2325 |
| PHYS 2126 | | PHYS 2326 |
| PHYS 2325 | MATH 2413 or MATH 2450 | |
| PHYS 2326 | PHYS 2325, MATH 2414 or MATH 2451 | |