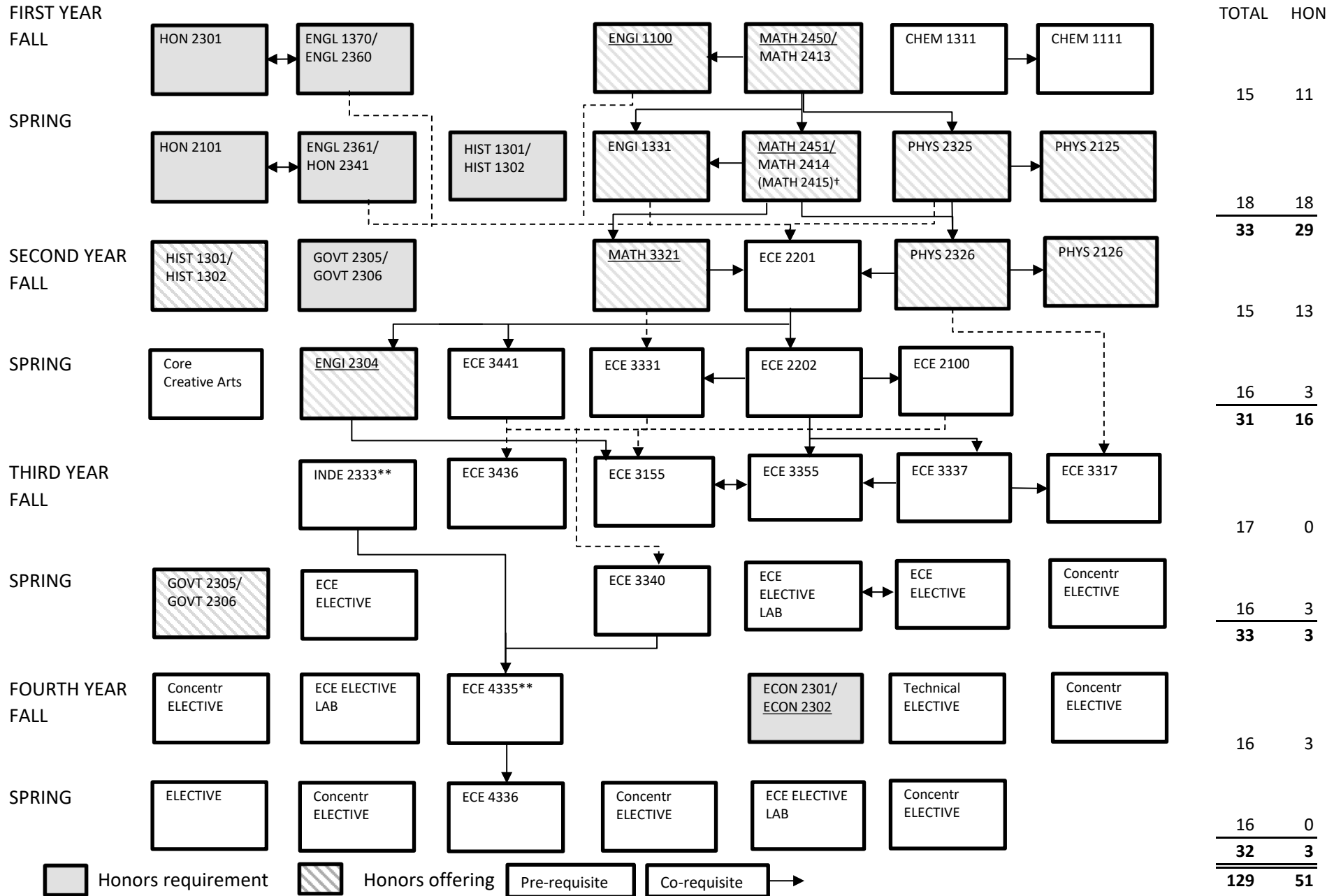


BACHELOR OF SCIENCE IN ELECTRICAL ENGINEERING UNIVERSITY HONORS



** Refer to back for requisits

† Students who successful complete the Accelerated Calculus sequence (MATH 2450 2451) will receive equivalent credit to calculus 1, 2, 3.

Class	Prerequisite	Corequisite
CHEM 1111		CHEM 1311
CHEM 1311	MATH 2312	
ECE 2100		ECE 2202
ECE 2201	ENGI 1100, ENGI 1331, ENGL 1370 or 1302, ENGL 2361 or 1301, MATH 2413, MATH 2414, PHYS 2325, PHYS 2125	MATH 2415, MATH 3321, PHYS 2126, PHYS 2326
ECE 2202	ECE 2201, PHYS 2126, PHYS 2326, MATH 2415 or MATH 2451	
ECE 3155	ECE 2100, ENGI 2304	ECE 3355
ECE 3317	PHYS 2126, PHYS 2326	ECE 3337
ECE 3331	MATH 3321	ECE 2201
ECE 3337	ECE 2202	
ECE 3340	ECE 3331	
ECE 3355	ECE 2202	ECE 3337, ECE 3155
ECE 3436	ECE 3331 and 3441	ECE 2100
ECE 3441	ECE 2201	
ECE 4335	ECE 3155, ECE 3317, ECE 3340, ECE 3355, ECE 3436, INDE 2333	
ECE 4336	ECE 4335	
ECON 2304	MATH 1310	
ENGI 1100		MATH 2413 or 2450
ENGI 1331	MATH 2450 or MATH 2413, CHEM 1311 or PHYS 2325	
ENGI 2304	ENGI 1100, ENGL 1302 or ENGL 1370, ECE 2201	
INDE 2333	MATH 2414 or MATH 2451, ENGI 1331	
MATH 2450	85 on MATH 2413 placement exam	
MATH 2451	MATH 2450	
MATH 3321	MATH 2414 or 2451	
PHYS 2125		PHYS 2325
PHYS 2126		PHYS 2326
PHYS 2325	MATH 2450 or MATH 2413	
PHYS 2326	PHYS 2325, MATH 2414 or MATH 2451	