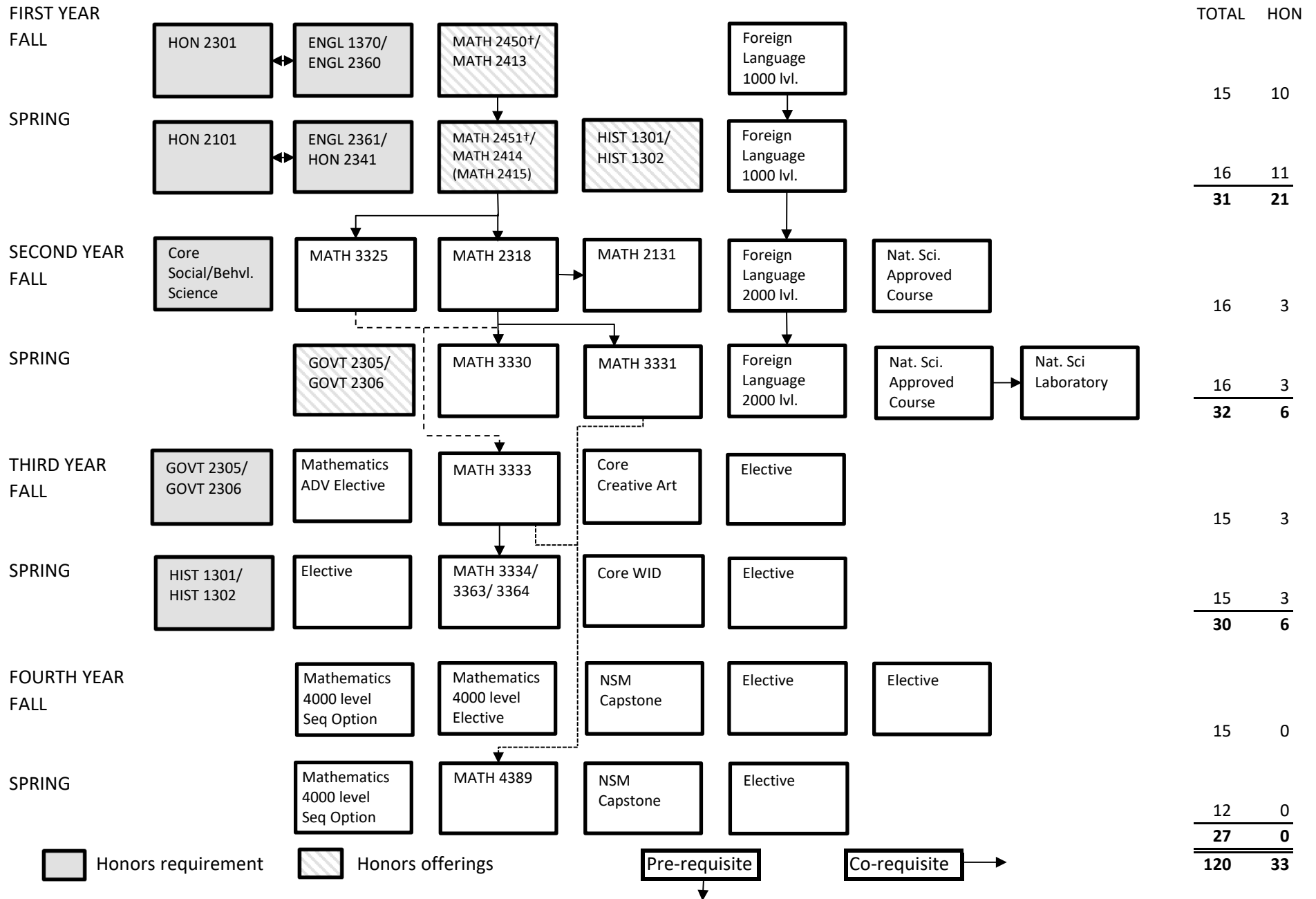


**BACHELOR OF ARTS IN MATHEMATICS
UNIVERSITY HONORS**



† Students who successful complete the Accelerated Calculus sequence (MATH 2450 2451) will receive equivalent credit to calculus 1, 2, 3.

**BACHELOR OF ARTS IN MATHEMATICS
UNIVERSITY HONORS**

Class	Prerequisite	Corequisite
MATH 2450	85 or better on the MATH 2413 placement exam	
MATH 2451	MATH 2450	
MATH 2131		MATH 2318
MATH 2318		MATH 2414 or MATH 2451
MATH 3325	MATH 2451 or MATH 2415 or MATH 2318 or MATH 3321*	
MATH 3330	MATH 2318, MATH 3325	
MATH 3331	MATH 2415 or MATH 2451, MATH 2318	
MATH 3333	MATH 2415 or MATH 2451, MATH 3325	
MATH 3334	MATH 2318, MATH 3333	
MATH 3363	MATH 2415 or MATH 2451, MATH 3321* or MATH 3331	
MATH 3364	MATH 2415 or MATH 2451	
MATH 4389	MATH 3331, MATH 3333, 4000-level class	
Sequence 1		
MATH/BIO 4309	MATH 3331, BIOL 3301*	
MATH/BIO 4310	MATH 3339* or MATH 3349, BIOL 3306*	
Sequence 2		
MATH 4331	MATH 3333	
MATH 4332	MATH 4331	
Sequence 3		
MATH 4335	MATH 3331 & 3 hrs. Adv. Math	
MATH 4362	MATH 3331 & 3 hrs. Adv. Math	
Sequence 4		
MATH 4350	MATH 2415 or MATH 2451, 6 hrs. Adv. Math	
MATH 4351	MATH 2415 or MATH 2451, 6 hrs. Adv. Math	
Sequence 5		
MATH 4364	MATH 3331 or MATH 3321* or MATH 3363	
MATH 4351	MATH 3331 & 3 hrs. Adv. Math	
Sequence 6		
MATH 4364	MATH 3331 or MATH 3321* or MATH 3363	
MATH 4366	MATH 2318 & 6 hrs. Adv. Math	
Sequence 7		
MATH 4377	MATH 2318, MATH 3325 & 3 hrs. Adv. Math	
MATH 4378	MATH 4377	

***Denotes classes not listed in the degreeplan requirements**

† Students who successful complete the Accelerated Calculus sequence (MATH 2450 2451) will receive equivalent credit to calculus 1, 2, 3.