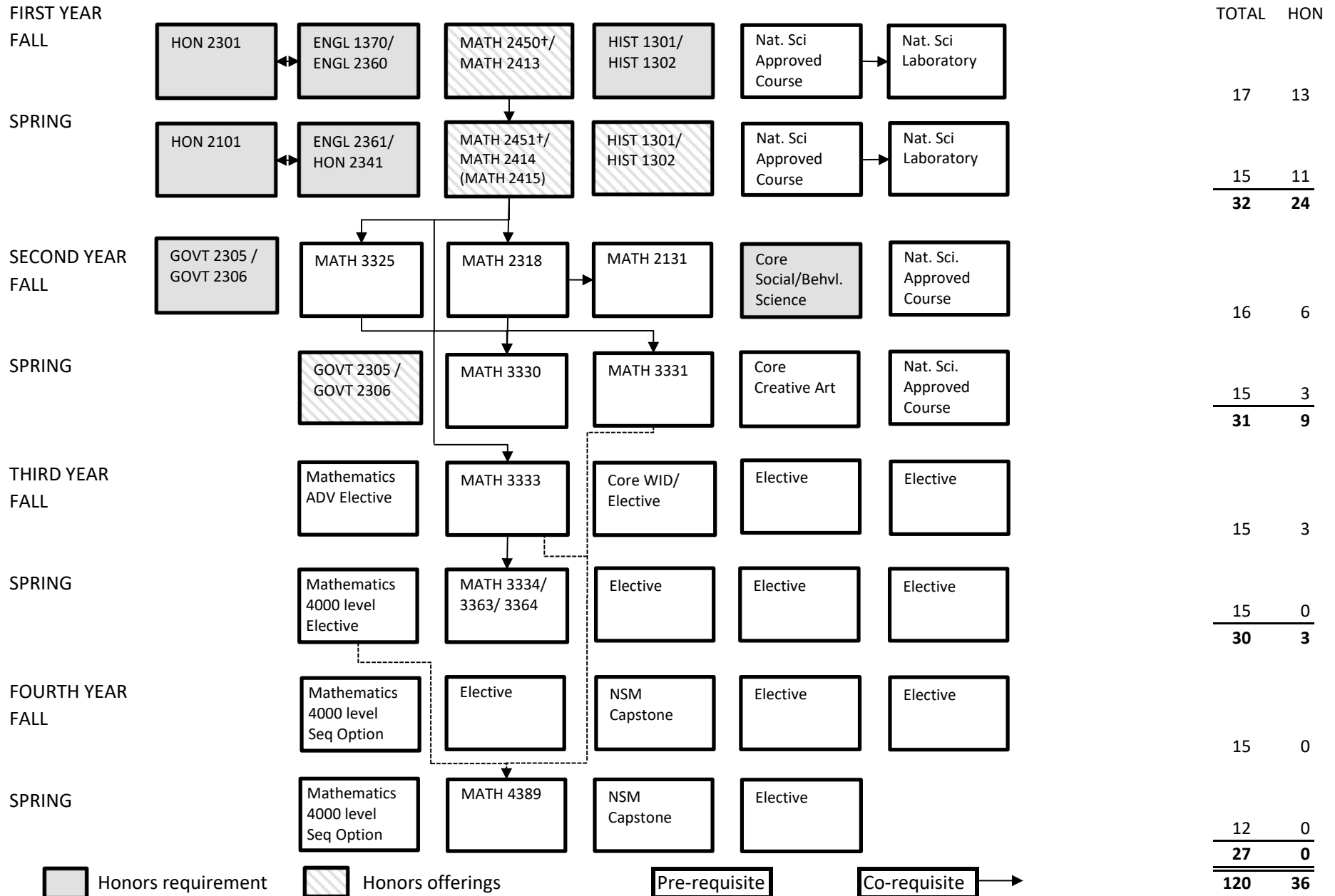


**BACHELOR OF SCIENCE IN MATHEMATICS
UNIVERSITY HONORS**



† Students who successful complete the Accelerated Calculus sequence (MATH 2450 2451) will receive equivalent credit to calculus 1, 2, 3.

| Class | Prerequisite | Corequisite |
|---|--|------------------------|
| MATH 2450 | 85 or better on the MATH 2413 placement exam | |
| MATH 2451 | MATH 2450 | |
| MATH 2131 | | MATH 2318 |
| MATH 2318 | | MATH 2414 or MATH 2451 |
| MATH 3325 | MATH 2415 or MATH 2451 or MATH 2318 or MATH 3321 | |
| MATH 3330 | MATH 2318, MATH 3325 | |
| MATH 3331 | MATH 2415 or MATH 2451, MATH 2318 | |
| MATH 3333 | MATH 2415 or MATH 2451, MATH 3325 | |
| MATH 3334 | MATH 2318, MATH 3333 | |
| MATH 3363 | MATH 2415 or MATH 2451, MATH 3321* or MATH 3331 | |
| MATH 3364 | MATH 2415 or MATH 2451 | |
| MATH 4389 | MATH 3331, MATH 3333, 4000-level class | |
| Sequence 1 | | |
| MATH/BIOL 4309 | MATH 3331, BIOL 3301* | |
| MATH/BIOL 4310 | MATH 3339* or MATH 3349, BIOL 3306* | |
| Sequence 2 | | |
| MATH 4331 | MATH 3333 | |
| MATH 4332 | MATH 4331 | |
| Sequence 3 | | |
| MATH 4335 | MATH 3331 & 3 hrs. Adv. Math | |
| MATH 4362 | MATH 3331 & 3 hrs. Adv. Math | |
| Sequence 4 | | |
| MATH 4350 | MATH 2415 or MATH 2451, 6 hrs. Adv. Math | |
| MATH 4351 | MATH 2415 or MATH 2451, 6 hrs. Adv. Math | |
| Sequence 5 | | |
| MATH 4364 | MATH 3331 or MATH 3321* or MATH 3363 | |
| MATH 4351 | MATH 3331 & 3 hrs. Adv. Math | |
| Sequence 6 | | |
| MATH 4364 | MATH 3331 or MATH 3321* or MATH 3363 | |
| MATH 4366 | MATH 2318 & 6 hrs. Adv. Math | |
| Sequence 7 | | |
| MATH 4377 | MATH 2318, MATH 3325, 3 hours adv math. | |
| MATH 4378 | MATH 4377 | |
| *Denotes classes not listed in the degreeplan requirements | | |