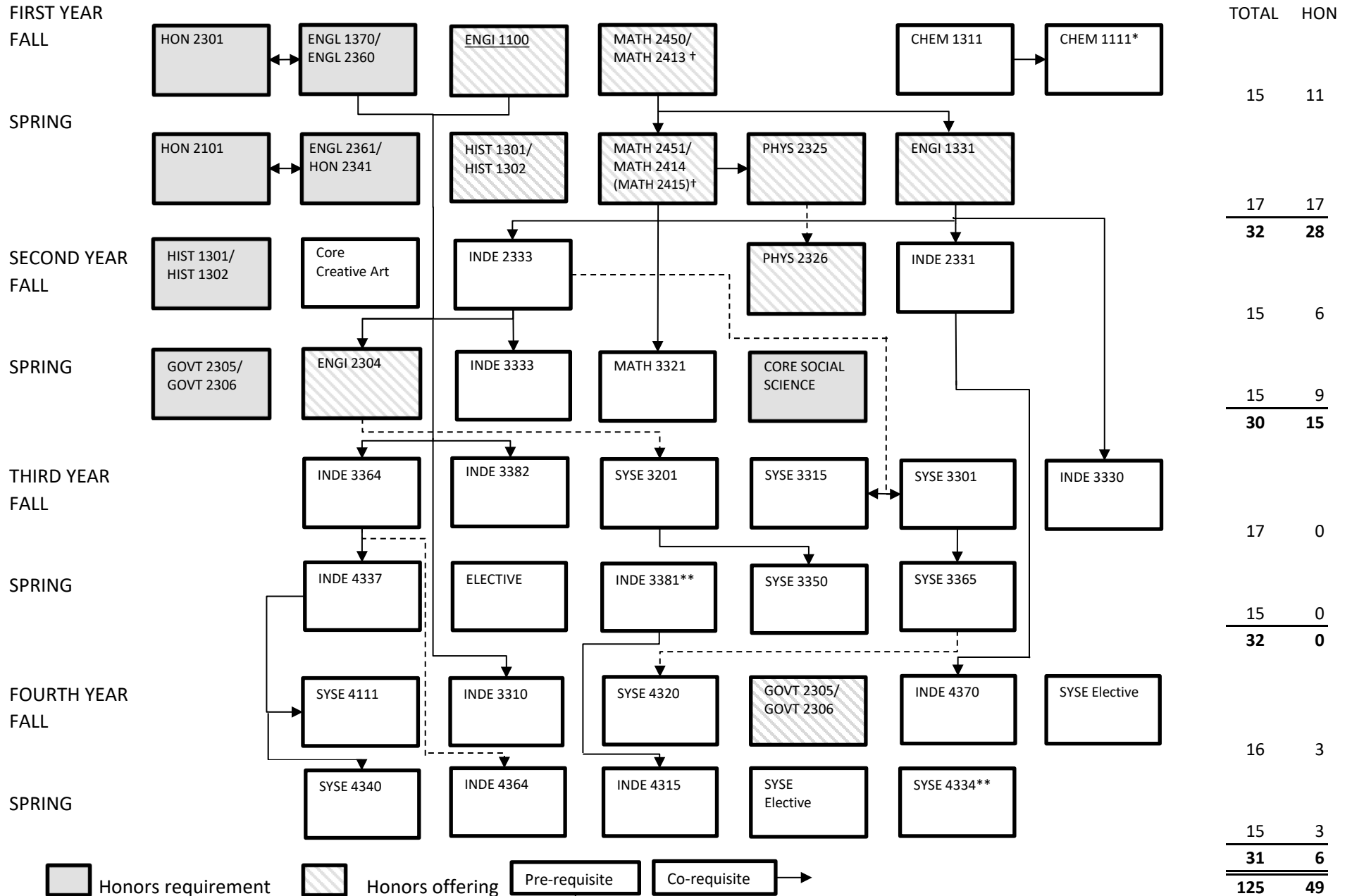


BACHELOR OF SCIENCE IN SYSTEMS ENGINEERING UNIVERSITY HONORS



**Pre-reqs on back
*CHEM 1111 lab not required for students completing the Honors Fundamental Chemistry Sequence receive a grade of C- or better in all coursework

**BACHELOR OF SCIENCE IN INDUSTRIAL ENGINEERING
UNIVERSITY HONORS**

Class	Prerequisite	Corequisite
CEA 3201	ECE 3341, ENGI 2304	
CHEM 1111		CHEM 1311
CHEM 1311	MATH 2312	
ENGI 1100		MATH 2413
ENGI 1331	ENGI 1100 MATH 2413 or MATH 2450, CHEM 1311 or PHYS 2325	
ENGI 2304	ENGI 1100, ENGL 1302 or ENGL 1370, BIOE 2201 or BIOE 2331 or ECE 2201 or CHEE 2331 or ENGR 2301 or INDE 2333 or MECE 2336 or PETR 2311.	
INDE 2331	ENGI 1331	
INDE 2333	MATH 2414 or MATH 2451, ENGI 1331	
INDE 3310	INDE 2333	
INDE 3330	ENGI 1331	
INDE 3333	INDE 2333	
INDE 3364	INDE 2333	
INDE 3381	INDE 2331 & MATH 3321	
INDE 3382	INDE 2333	
INDE 4315	INDE 3381	
INDE 4337	ENGI 2304, INDE 3364	
INDE 4364	INDE 3364	
INDE 4370	INDE 2331, INDE 3382	
MATH 2450 †	85 on Math Placement	
MATH 2451 †	MATH 2450	
MATH 2413	MATH 2312 or Math Placement	
MATH 2414	MATH 2413	
MATH 2415	MATH 2414	
MATH 3321	MATH 2314 or MATH 2451	
PHYS 2325	MATH 2413 or MATH 2450	
PHYS 2326	PHYS 2325, MATH 2414 or MATH 2451	
SYSE 3301		INDE 2333
SYSE 3315		SYSE 3301
SYSE 3350	SYSE 3201	
SYSE 3365	SYSE 3301	
SYSE 4111		INDE 4331
SYSE 4320	INDE 3333, SYSE 3355	
SYSE 4334	INDE 3333, SYSE 3340, SYSE 3365	
SYSE 4340	INDE 4337	

† Students who successful complete the Accelerated Calculus sequence (MATH 2450 & 2451) will receive equivalent credit to calculus 1, 2, & 3.